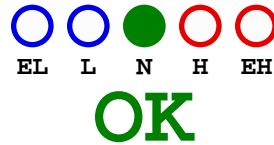




z-Logg.com

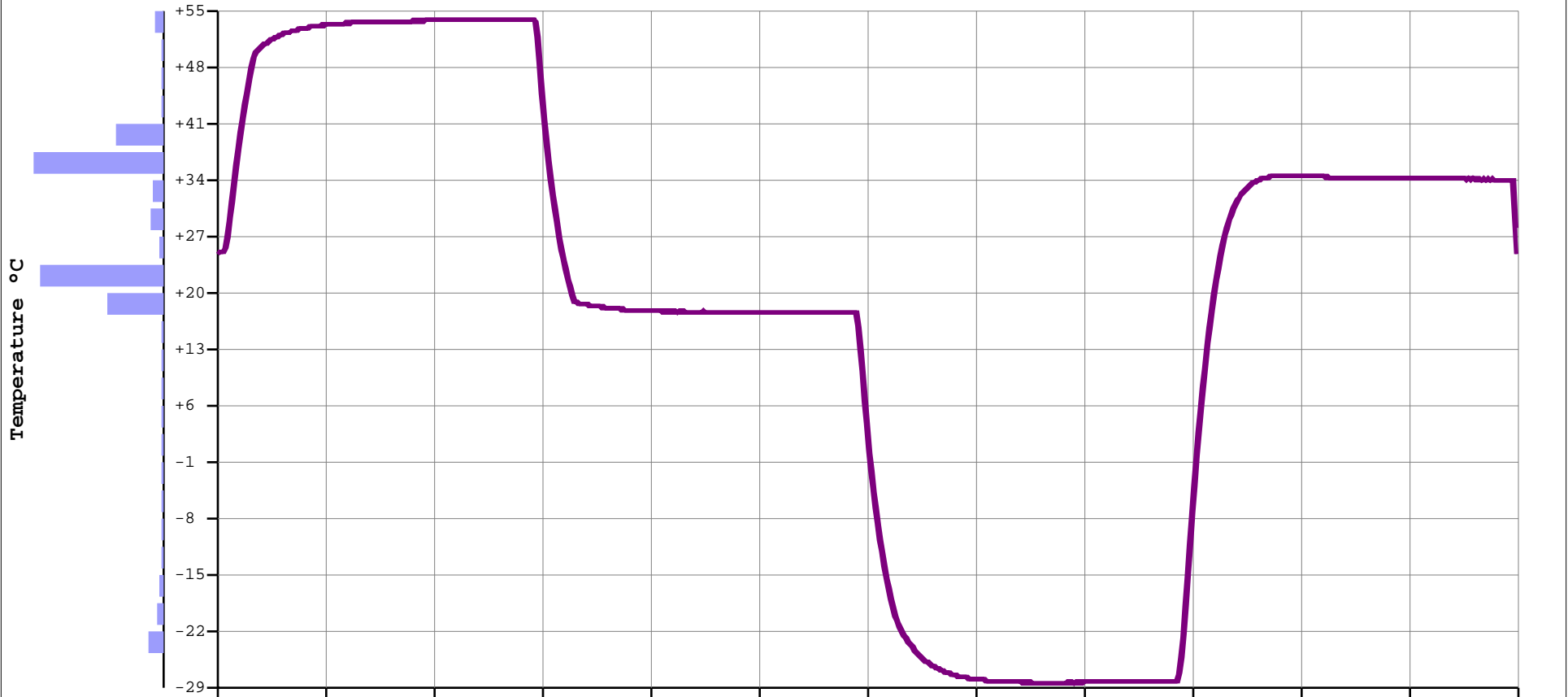
Specification & Configuration	
Device Name:	z1MuH
Device Type:	Multi-use Int.Temp.
Serial Number:	1M6C0859
Time Zone:	GMT:+1
Firmware Version:	1.17F
Software Version:	1.04.78 Admin
Trip Number:	4
Trips Remaining:	Multiple
Temp. Unit:	Celsius
Temp. Range:	-40 to +80°C
Battery:	3.06V - 100%
Total Records:	6646
Sampling Rate:	30 sec
Start Delay:	0 sec
Start Time:	19/12/16 21:00
Stop Time:	Parameter not set



Alarms (Time above / below Alarms)				
Type:	Temp.	Consecutive	Total	Out of Spec.
EH:	not set			
H:	not set			
L:	not set			
EL:	not set			

Summary / Statistics		File Created at: 26/12/16 00:23:09	
Maximum Temperature:	+58.05°C	Status:	Stopped
Minimum Temperature:	-28.22°C	Trip Duration:	02d 07:22:30
Average Temperature:	+21.43°C	Time within Spec:	02d 07:22:30
Mean Kinetic Temp:	+18.16°C	Started Time:	19/12/16 21:00:00
Active Bookmarks:	0	Stopped Time:	21/12/16 00:41:11
Started by:	Start timer	Memory Used:	51% 6646/12792
Stopped by:	Manual	Calibration due:	12/28/2017

Description: zLogg Calibration Test



Max. #544	21:00:00	23:18:25	01:36:51	03:55:17	06:13:43	08:32:09	10:50:35	13:09:01	15:27:27	17:45:53	20:04:19	22:22:45	00:41:11
+34.0/+37.5°C	19/12/16	19/12/16	20/12/16	20/12/16	20/12/16	20/12/16	20/12/16	20/12/16	20/12/16	20/12/16	20/12/16	20/12/16	21/12/16

#Readings

Time/Date (dd/mm/yy)

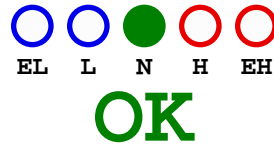
Notes:

This z1MuH with an accuracy of +/-0.3°C from -40°C to +80°C (+/-0.6°F from -40°F to +176°F) and an resolution of 0.01°C (°F) has been calibrated in the calibration chamber of zLogg. The reference equipment used is traceable to National Institute of Standards and Technology. Device:#1M6C0859



z-Logg.com

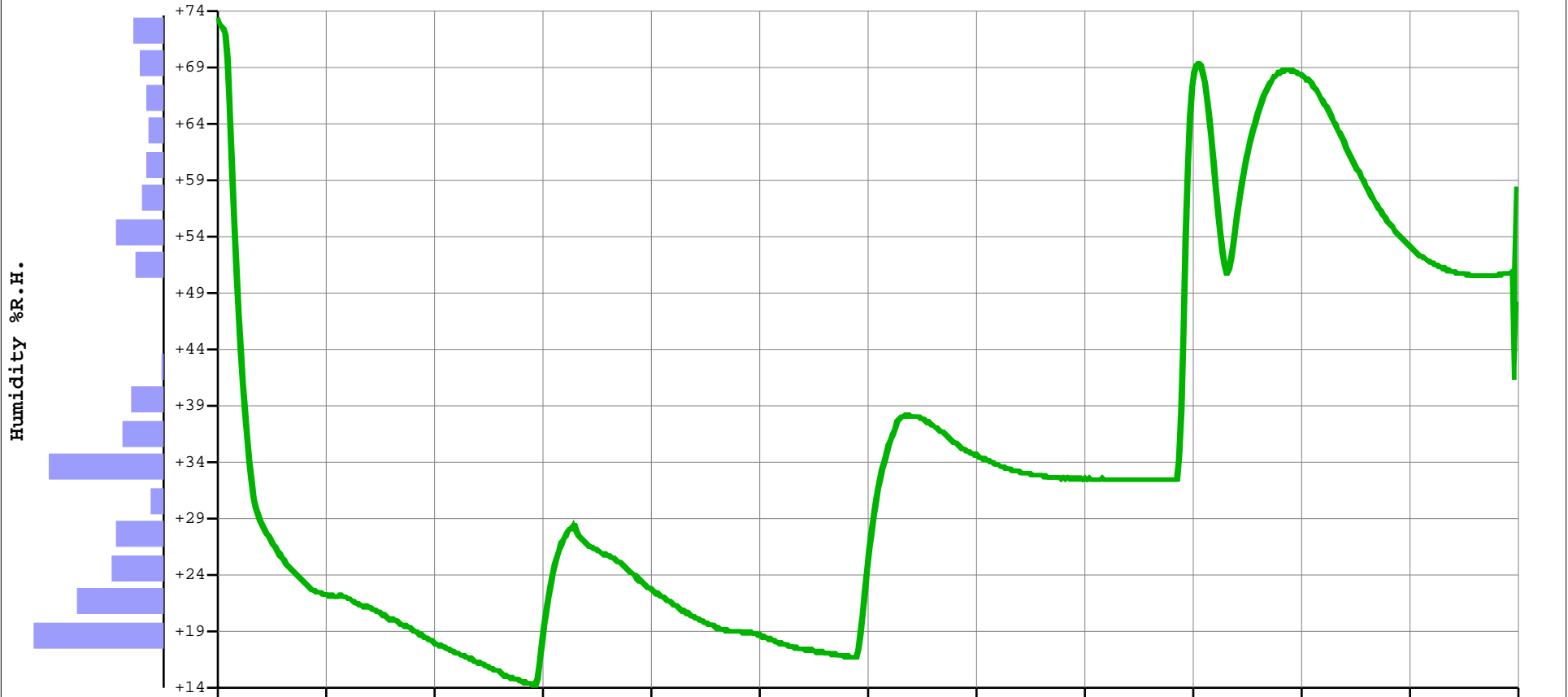
Specification & Configuration	
Device Name:	z1MuH
Device Type:	Multi-use Int.Temp/Hum
Serial Number:	1M6C0859
Time Zone:	GMT:+1
Firmware Version:	1.17F
Software Version:	1.04.78 Admin
Trip Number:	4
Trips Remaining:	Multiple
Temp. Unit:	Celsius
Temp. Range:	-40 to +80°C
Battery:	3.06V - 100%
Total Records:	6646
Sampling Rate:	30 sec
Start Delay:	0 sec
Start Time:	19/12/16 21:00
Stop Time:	Parameter not set



Alarms (Time above / below Alarms)				
Type:	Hum.	Consecutive	Total	Out of Spec.
EH:	not set			
H:	not set			
L:	not set			
EL:	not set			

Summary / Statistics		File Created at: 26/12/16 00:23:10	
Maximum Humidity:	+66.66°C	Status:	Stopped
Minimum Humidity:	+14.21°C	Trip Duration:	02d 07:22:30
Average Humidity:	+32.14°C	Time within Spec:	02d 07:22:30
Active Bookmarks:	0	Started Time:	19/12/16 21:00:00
Started by:	Start timer	Stopped Time:	21/12/16 00:41:11
Stopped by:	Manual	Memory Used:	51% 6646/12792

Description: zLogg Calibration Test



Max. #541	21:00:00	23:18:25	01:36:51	03:55:17	06:13:43	08:32:09	10:50:35	13:09:01	15:27:27	17:45:53	20:04:19	22:22:45	00:41:11
+16.5/+19.0%	19/12/16	19/12/16	20/12/16	20/12/16	20/12/16	20/12/16	20/12/16	20/12/16	20/12/16	20/12/16	20/12/16	20/12/16	21/12/16

#Readings

Time/Date (dd/mm/yy)

Notes:

This z1MuH with an accuracy of +/-0.3°C from -40°C to +80°C (+/-0.6°F from -40°F to +176°F) and an resolution of 0.01°C (°F) has been calibrated in the calibration chamber of zLogg. The reference equipment used is traceable to National Institute of Standards and Technology. Device:#1M6C0859